

## A Need for Local, High Quality, and Cost Effective Care

In the early 1980s, Aultman Hospital President Richard Pryce reported to the Aultman Board about the hospital's cost controls and efforts to keep costs down.

In spite of Aultman's efforts to control cost, Stark County business owners reported their companies were still receiving significant rate increases for health insurance. Insurance companies were telling local businesses that hospitals were raising prices necessitating the increase in premiums.

In reality, higher costs in other areas of Northeast Ohio were being offset by the insurance company profits being generated in Stark County.

This dynamic spawned the birth of AultCare with the idea of keeping healthcare and health insurance local and not subsidizing insurance companies.

## The AultCare Difference

As a local healthcare system, AultCare is comprised of a team of local people who understand their members and the culture of their community.

Since its implementation in 1985, the overall goals of Aultman and AultCare were to always keep as many services in the area as possible, and to keep costs down to the local community. These goals remain in place today.

## Our Core Beliefs

Our core beliefs matter to us, and they matter to our customers. Within these beliefs, we offer a value impact, which leads to a lasting influence to lead our community to improved health.

These core beliefs consist of:

- Local access to quality care
- Primary Care Physician engagement
- Strong commitment to cost control
- Exceptional customer service

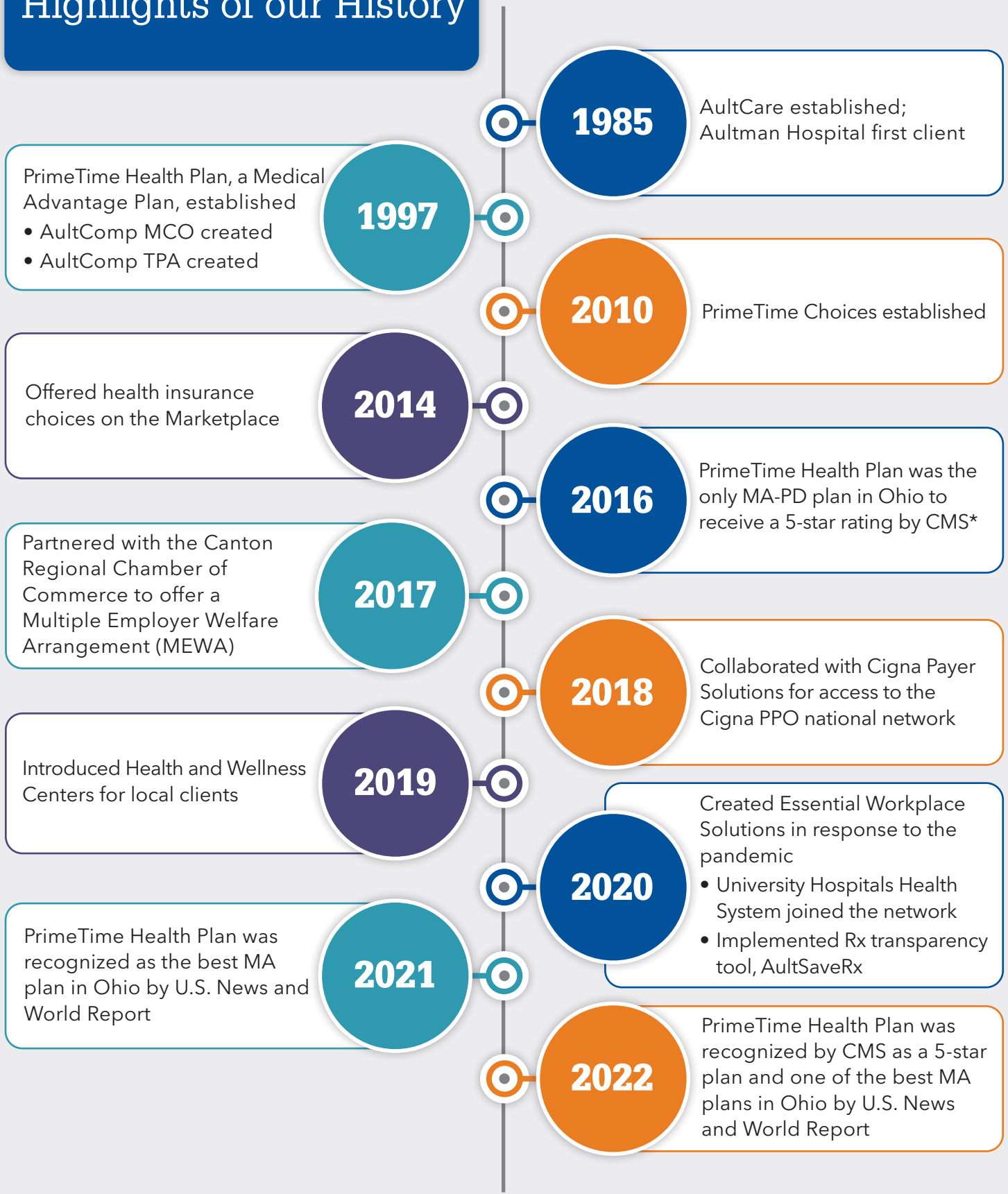
## Our Products and Services

- Health (Self-Funded & Insured)
- Vision
- Dental
- Data Analytics
- Small Cap Stop-Loss
- Workers' Compensation
- FSA
- HRA
- HSA
- Consumer Driven Health Plans
- Pharmacy
- Medicare Plans
- Wellness

To learn more information, visit [aultcare.com](http://aultcare.com).

*Continued on reverse side.*

## Highlights of our History



\*Each year, Medicare evaluates plans on a 5-star rating system.